

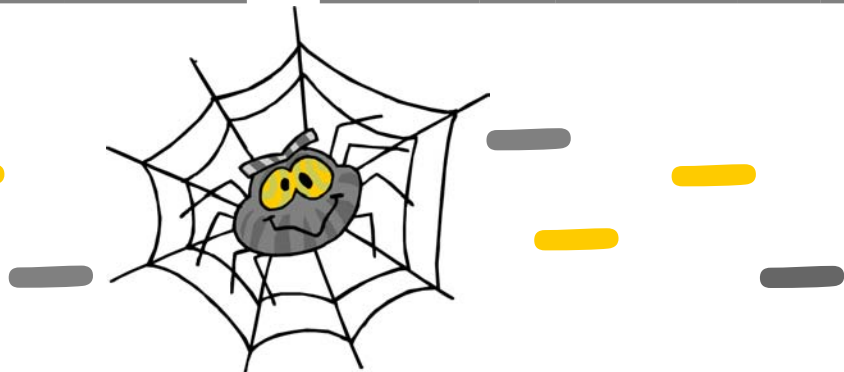
# Soustraire des centaines



Complète les chiffres manquants :

200	-	100	=	100
600	-	300	=	300
500	-	200	=	300
700	-	200	=	500
800	-	500	=	300
400	-	100	=	300
800	-	300	=	500
1000	-	600	=	400

300	-	200	=	100
400	-	100	=	300
500	-	400	=	100
700	-	400	=	300
600	-	500	=	100
800	-	600	=	200
500	-	100	=	400
1000	-	200	=	800



Calcule :

220	-	120	=	100
450	-	300	=	150
550	-	420	=	130
410	-	110	=	300
660	-	220	=	440
950	-	450	=	500
710	-	160	=	550
720	-	340	=	380

890	-	250	=	640
720	-	410	=	310
980	-	260	=	720
330	-	130	=	200
470	-	350	=	120
820	-	170	=	650
780	-	530	=	250
390	-	180	=	210